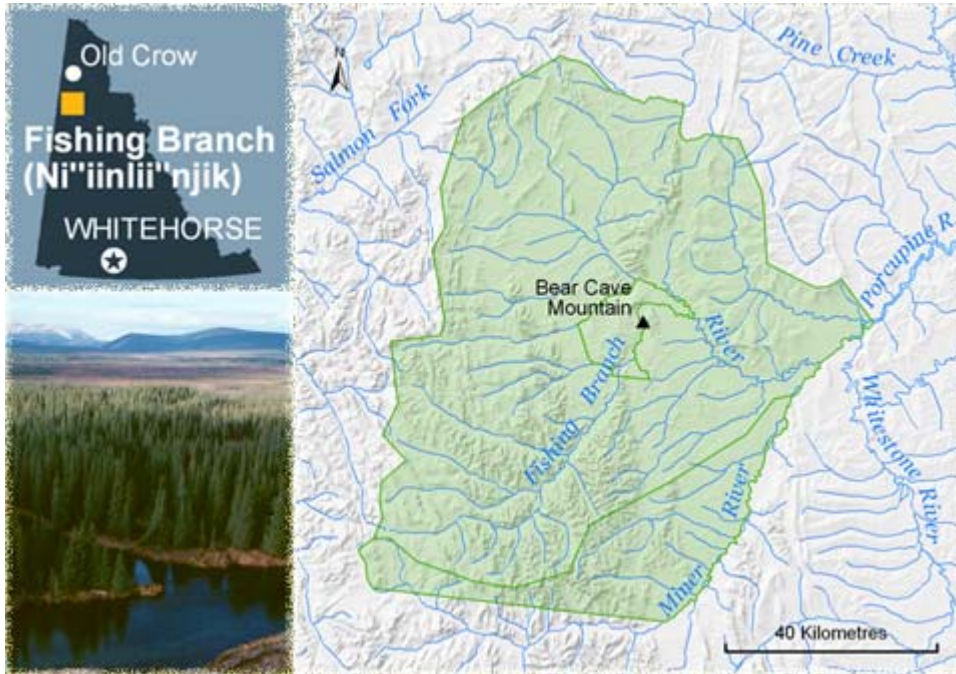


## Fishing Branch Ni'inlii Njik Park – Visitor Information



Fishing Branch Ni'inlii Njik Park is a wilderness area at the arctic circle far from the nearest road or airport. One of the primary purposes of the park is to protect the Fishing Branch watershed which supports the salmon and bears of the Ecological Reserve.

Bear viewing from the Settlement Land adjacent to the Ecological Reserve during the September-October salmon spawning season can be arranged once requirements of the management plan are met.

Rolling terrain and open tundra landscapes throughout the park, and the rocky ridges of the North Ogilvies can provide attractive hiking opportunities. The recreational potential of the area remains largely unexplored.

Access to the Ecological Reserve area is restricted to protect wildlife and habitat. Check with Yukon Parks for current information.

Far from the nearest highway or community, as a visitor to Fishing Branch you are on your own. You should bring all the equipment needed for independent camping and travel in an arctic environment. You should also make reliable arrangements for pickup and contact in case of emergency. For more information on travel in the Yukon wilderness, see the booklet *Into the Yukon Wilderness*.